

UNIVERSAL. HEAVY-DUTY. POLY WELDER PRO.



The RainFlo Poly Welder Pro can make permanent repairs to almost anything made of polyethylene. This water tank repair kit comes with everything you need - a heavy-duty element with a tip that makes repairs easy, 10 feet of welding strips, and stainless steel reinforcing mesh.

The 200W welding iron in the Poly Welder Pro kit provides high heat, greater control, deeper blending, and faster repairs. The specially designed tear-drop welding tip allows access into tight areas while providing plenty of area to blend the plastic welding strips into the repair surface.

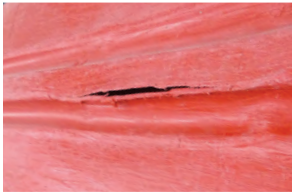
Key Benefits:

- Easy to repair polyethylene products
- Durable, long-lasting professional tool
- Tear drop welding tip allows access into tight areas
- Color matching materials
- Stainless steel mesh provides longevity

ORDERING INFORMATION

Part Number	Description
36216	Poly welder pro plastic repair kit - heavy-duty 200W welding iron, welder stand, 5"x10" stainless steel reinforcing mesh, 10' of polyethylene welding strips
36148	Black welding strip refill, 12" length, 5-pack
36162	Blue welding strip refill, 12" length, 5-pack
36131	Green welding strip refill, 12" length, 5-pack
36155	Natural white welding strip refill, 12" length, 5-pack
36193	Orange welding strip refill, 12" length, 5-pack
36179	Red welding strip refill, 12" length, 5-pack
36209	Sand welding strip refill, 12" length, 5-pack
36186	Yellow welding strip refill, 12" length, 5-pack

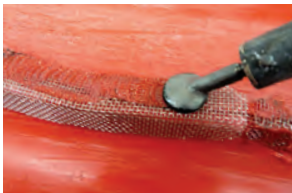
DIRECTIONS



Clean and dry the damaged area. V-groove the crack or taper the edges of the hole using a rotary tool or the heated edge of the welder.



Pre-heat the damaged area with the welder until it becomes tacky. If the inside of the item is accessible, press stainless steel mesh over the area with the hot welding tip. Overlap the edges of the damage, 1/2" on either side. If the inside is not accessible, mesh may be pressed into the outside to strengthen the repair.



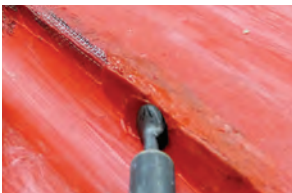
Using the welder embed all of the mesh.



Melt the rod with the welder and begin to cover the mesh. Weld about 1" at a time, melt the rod and the damaged area together, make sure the material is thoroughly mixed with the rod.



*To fill holes: Start on the outside of the hole and fill the hole by adding material to the edges, work towards the center. If the hole is large, embed mesh over the hole and use the mesh as a framework to apply the melted rod.



Work slowly, smooth the weld and shape the plastic until the desired shape is achieved.



Optional: You may sand the welded joint to match the surrounding area. For a shiny new look, sand with 1000 grit or finer sand paper and polish with a buffer.